



## Hand Wash Basin

Stoddart Manufacturing designed and introduced the easy mount single piece bracket to make Stoddart basins 1<sup>st</sup> choice for strength and 1<sup>st</sup> choice for easy installation.

The standard unit comes with a 300mm stainless steel splashback to comply with the health and plumbing requirements of most authorities.

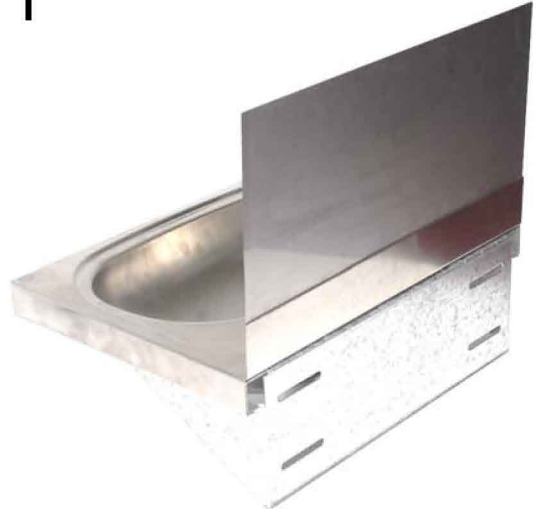
Stoddart Manufacturing uses a large, deep drawn recessed bowl to reduce splashing and spillage. The bowl has a sizable front fascia to provide better aesthetics and rigidity.

**Models: SPPL.WB.H1.300.xx**

SPPL	Standard Plumbing Product
WB	(Hand) Wash Basin
H1	Assembly unit complete with plug & waste and easy-mount bracket
300	300mm stainless steel splashback
xx	SS = stainless steel mounting bracket TV = Tempering valve GT = Galvin easy push tap



300mm splashback complies with health requirements of most authorities



Easy mount single piece bracket is available in gal or stainless with multiple fixing holes pre-punched

Large front fascia for better aesthetics and strength

### Features and Benefits:

- Large and deep bowl with recessed inner bowl to minimise splashing.
- Sturdy stainless steel construction for life-long service in public amenities & schools.
- The standard unit comes with a 300mm stainless steel splash-back to comply with plumbing requirements of most authorities
- Easy mount single piece bracket has multiple fixing holes for quick installation by plumber.
- Large, deep bowl provides extra capacity.
- Standard bracket is standard in Galvanised steel.
- Optional stainless steel bracket can be ordered for Kitchens.
- Optional Galvin easy-push, timed flow button tap (GE-CP # 368696) can be ordered with unit
- Optional Tempering valve can be ordered with unit
- Suitable for use where disabled access is required.
- This is our approved design for use in Government schools.



Due to continuous product research and development, the information contained herein is subject to change without notification.

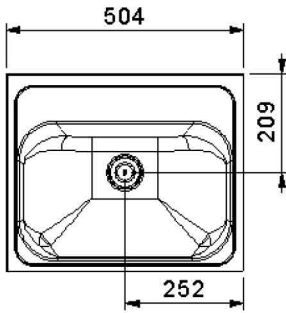
# Hand Wash Basin

**Specifications:**

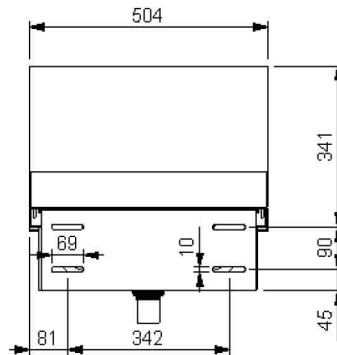
Construction:	Fully welded seamless construction, polished to No 4 brushed finish. Stainless steel 304 grade.
Waste Connection:	40mm. plastic plug and waste supplied
Unit Fixing:	The unit is supplied with 1.6mm stainless steel wall mounting bracket with 10 mm fixing holes.
Disabled Fixing Height:	Recommended fixing height from top of unit to finished floor level is 780mm to 800mm.

**Models:**

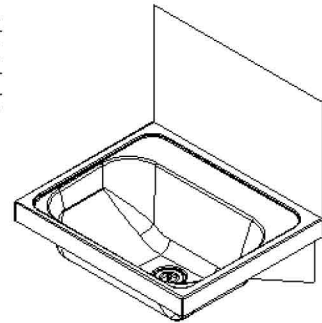
<b>SPPL.WB.H1.300.xx</b>	
SPPL	Standard Plumbing Product
WB	(Hand) Wash Basin
H1	Assembly unit complete with plug & waste and easy-mount bracket
300	300mm stainless steel splashback
xx	SS = stainless steel mounting bracket TV = Tempering valve GT = Galvin easy push tap



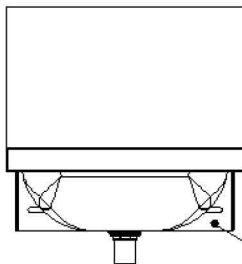
PLAN VIEW



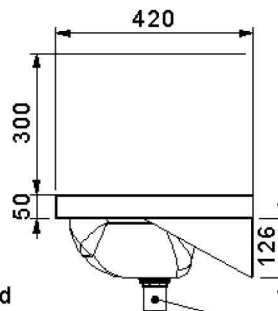
REAR VIEW



ISOMETRIC VIEW



FRONT VIEW



END VIEW

2.0mm Galvanized fixing bracket.

40mm Plug & Waste