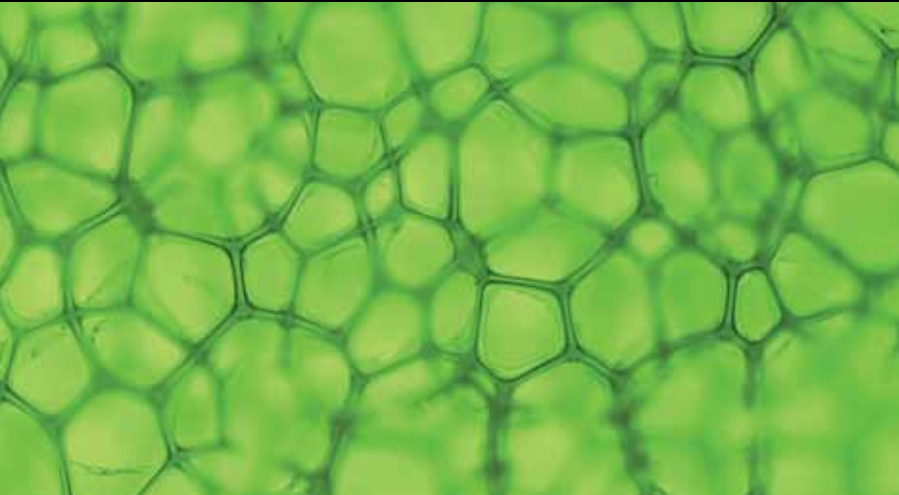


**Xtreme**  
in innovation

**primus**

*experts in hygiene*



HYGIENE



EXPERTS  
IN HYGIENE

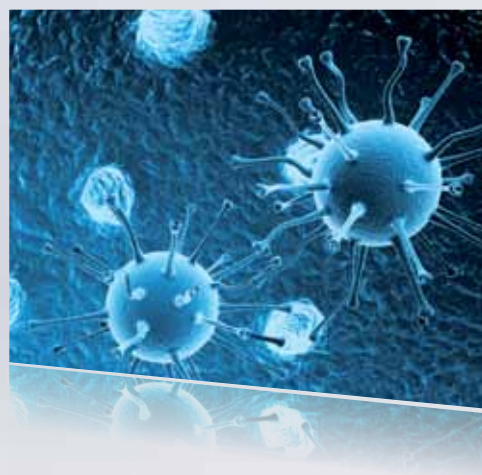


## STUDIES SHOW THAT LINEN IS A MAJOR FACTOR FOR THE TRANSFER OF INFECTIONS AND SUPERBUGS

- 10 to 15% of Nosocomial infections (leading to an average extra 4-5 days in hospital, and in extreme cases, the death of the patient) are due to unsatisfactory linen hygiene.
- Old people and children are more at risk to infection due to their less efficient immune systems.
- Operators must have total care management of the laundry to maintain a high level of hygiene in their global production, so ensuring that product is free of certain bacteria (ie: *Staphylococcus aureus*, *Salmonella*, *Listeria*, etc...)

# PRIMUS OFFERS YOU THE BEST DEFENCE

AGAINST CROSS CONTAMINATION  
OF SUPERBUGS WITHIN YOUR  
LAUNDRY



# STOP CROSS CONTAMINATION NOW!



This is such an important subject that Primus has decided to partner with two microbiological institutes and test, under real conditions the re contamination risks that apply to the laundry.

These tests were made in a laundry using Primus barrier washers with a physical separation of the soiled and clean sides of the laundry rooms. The establishments are certified to be in conformity with RABC\* by an external organisation. (less 12 CFU/25cm<sup>2</sup>).

	Type Hands	Hands (CFU/hand)	Air (CFU/m <sup>3</sup> )	Trolleys (CFU/25 cm <sup>2</sup> )
<b>Soiled area</b>	Total	1x10 <sup>3</sup>	NM* (>>3.8x10 <sup>2</sup> )	103
	Fungi	28	NM* (>>1.6x10 <sup>2</sup> )	3
<b>Clean area</b>	Total	>397	2x10 <sup>2</sup>	2,25
	Fungi	8	50	2,25

\* NM: No Measurable / too many germs

\*\* CFU - colony-forming unit is a measure of viable bacterial numbers

- The largest amount of germs are transmitted by hand
- Air is an important vector of propagation of micro-organisms
- Surfaces are a main vehicle of germ transmission too

\* The RABC is an abbreviation of Risk, Analysis, Biocontamination and Control. RABC is a Quality Management System and it complies with other QM and HACCP systems. The RABC system is implemented to avoid microbiological contamination of persons and products by laundry operation and to provide defined microbiological quality of laundered goods. The implemented RABC-System is controlled by external experts on a yearly basis.



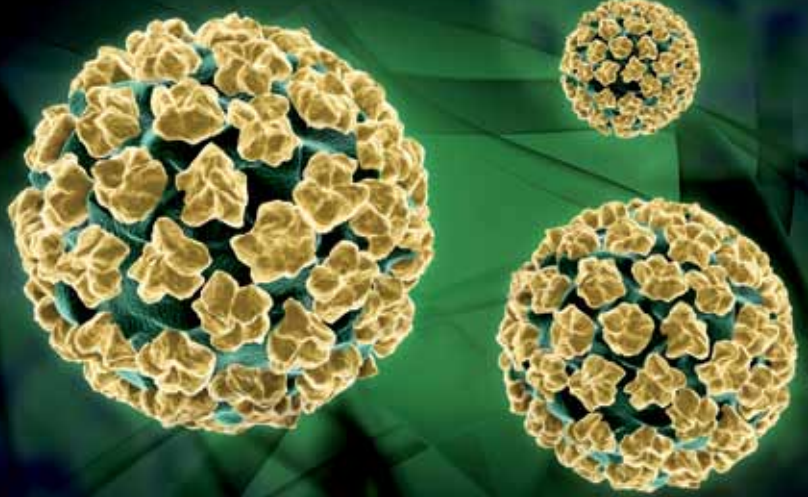
Contamination of a hand with glove in dirty side



Contamination of a hand without glove in clean side

PRIMUS OFFERS YOU THE BEST DEFENCE AGAINST CROSS CONTAMINATION OF SUPERBUGS WITHIN YOUR LAUNDRY

EXPERTS  
IN HYGIENE



PRIMUS HAS DEVELOPED A FULL RANGE OF BARRIER WASHERS IN ORDER TO SIMPLIFY AND TO OPTIMIZE THE SETTING UP OF YOUR LAUNDRY OFFERING THE BEST PROTECTION FOR EMPLOYEES, PATIENTS AND THE BEST PREVENTION FOR THE SPREADING OF MICRO-ORGANISMS AND SUPERBUGS.

---

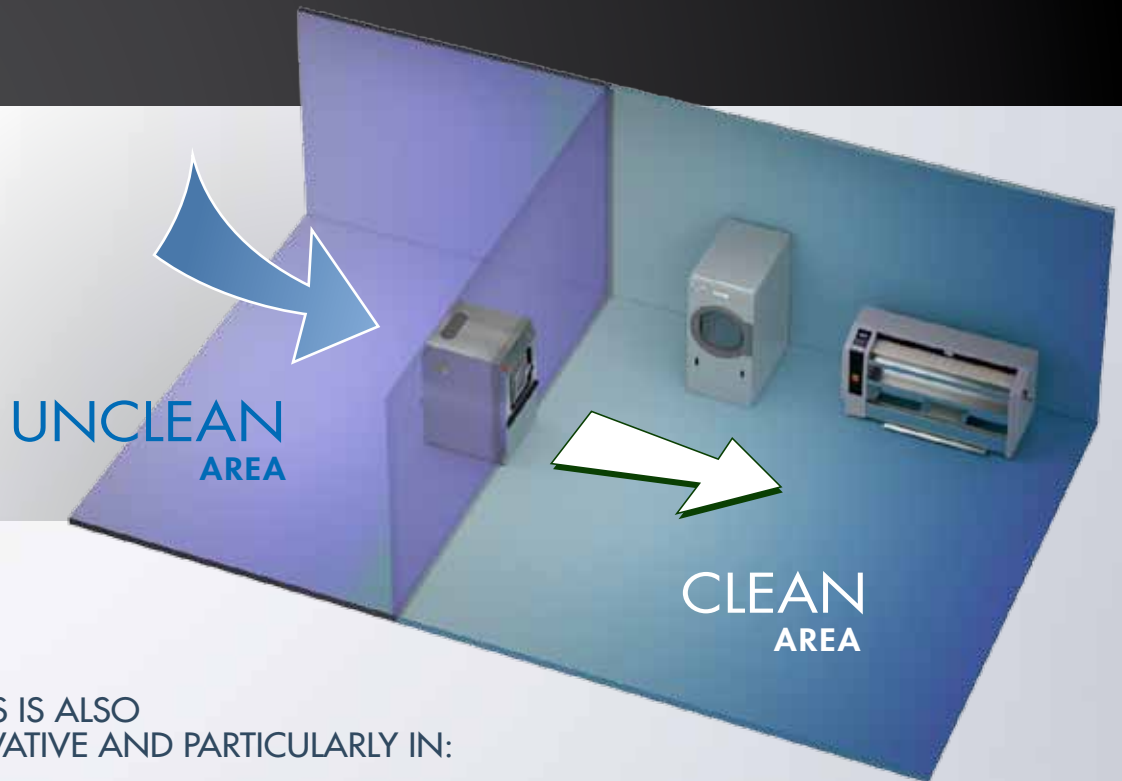
WHEN ADOPTING THE PRIMUS HYGIENIC SOLUTION, THE OPERATION OF YOUR LAUNDRY CONFORMS WITH BEST HYGIENIC PRACTICES:

- Respect for “walk forward” as in HACCP principles or the International Food Standard.
- Physical wall separates the laundry in two parts: soiled area and clean area.
- No risk of contact or crossing between soiled and clean linen.
- As an option, separate atmosphere pressures can be created between clean and soiled areas to prevent airborne re contamination.
- Specific “hygienic” programs for decontamination of laundry.
- Offers the best protection against the spreading of infections.
- Guarantees your investment in the future by anticipating the next regulations.

# A SOLID FOUNDATION FOR YOUR LAUNDRY HYGIENE!



# PRIMUS, YOUR PARTNER IN THE FIGHT FOR HYGIENE



PRIMUS IS ALSO INNOVATIVE AND PARTICULARLY IN:



## QUALITY

Highest quality components and raw material in the manufacturing process ensure a long life span and a safe investment.



## ERGONOMICS

A complete range of unique pass through models with large door openings either side for easy loading and unloading.



## ENVIRONMENT

Our dedicated engineers work continually to reduce water and electrical consumption and increase the efficiency of our machines. Water recycling is an option. Advanced waste management is applied in our production process.



## SIMPLICITY

Our own microprocessors, means a simple and easy to use control system for the user. And a uniform design across the whole range. Which allows technicians to have a standard programming logic to ensure the best technical support.



## CHOICE

Large capacity range allows a tailor made solution to suit your budget and operational requirements.



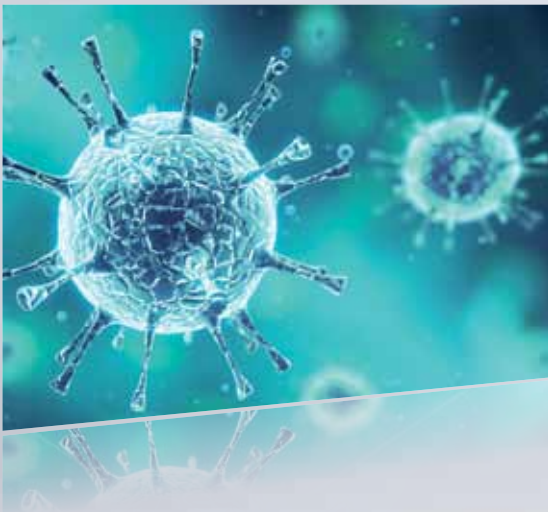
EXPERTS  
IN HYGIENE



## NF EN 14065 NORM - "LAUNDRY PROCESSED TEXTILES - BIO-CONTAMINATION CONTROL SYSTEM"

This European Standard describes a Risk Analysis and Biocontamination Control (RABC) system to enable laundries to continuously assure the microbiological quality of the laundered textiles. (The admitted value for clean linen is less 12 CFU / 25 cm<sup>2</sup>). This European Standard is compatible and may be easily integrated into an international recognised quality global management system. The norm specifies that "The management shall identify, provide and maintain the facilities it needs to achieve the control of biocontamination."

# AND REGULATIONS RECOMMENDATIONS



# WHAT ARE THE EU GUIDELINES AND REGULATIONS?



## HEALTH CARE

BP G 07-223:2004 REFERENTIAL:  
LAUNDRY PROCESSED TEXTILES

**This specifies best laundry practice as follows:**

- A physical separation of the room between soiled area and clean area is recommended while using barrier washers-extractors.
- Hand washing is always necessary following a described procedure.
- The “walk forward” concept applies.



## NURSING HOMES

NF X50-058 NORM - SERVICE LEVEL

This norm, applicable for nursing homes, concerns all services offered to patients. It states that if laundry is being processed in house, there should be a separate soiled and clean linen area.



## PHARMACEUTICAL & FOOD INDUSTRY

MANUAL OF ACCREDITATION: GFL - REFERENCE 4

**This specifies that the laundry function is organised to process the linen treatment by a standardised procedure:**

- Separation of soiled and clean linen must be ensured during transport.
- The linen treatment is the object of protocols and evaluations.
- The employees of the laundry have been trained in the hygiene rules applying to linen.
- Process controls are reviewed regularly.



# EXPERTS IN HYGIENE

## PRIMUS CAN CONSULT OVER THE WHOLE PROCESS

PRIMUS HYGIENIC SYSTEM PROVIDES  
A TOTAL SOLUTION



### 3. WASHING

Wash loads of the same type are processed together to avoid handling of the dirty or clean laundry. The Primus Trace-tech® system controls Temperature, Mechanics, Time and Chemicals and thus ensures the optimal wash quality.



### 4. FINISHING

Handling of the clean laundry is completed by staff who have used hand disinfection and wearing gloves to avoid the recontamination of the laundry.



### 5. CLEAN STORAGE

Store directly after processing - cover with plastic film / in closed cabinets  
- clean room and trolleys regularly  
- respect separated flows between clean and soiled linen.



### 1. COLLECTING AND SORTING

The presorting of the laundry is completed by the collector staff and the different wash loads separated in wash types, by staff using gloves for protection.



### 2. STORAGE

Shortest storage time should be applied up to a maximum of 48 hours. Trolleys have to be clean before each use. Specific room with lower air pressure, washing station and floor U-bend should be used.

## PRIMUS ACCOMPANIES YOU IN YOUR PROJECT!

Our team of specialized advisers, experienced designers, and Primus certified partners is ready to assist you in the realization of your project, helping you to meet your specific requirements and bringing you:

1. An audit of your laundry
2. The definition of needs
3. The technical drawing with energy reservations
4. The installation and maintenance of the machines
5. The training of the technical staff and users



Photo of the PC screen with hospital laundry



Plan of finished hygienic laundry project



# THE PRIMUS TOOLS THAT GIVE YOU MORE CONTROL



With the Primus Softwash® wet cleaning solution, the machines become fully multi-purpose and flexible to meet your total needs. The operator has the option of selecting a softwash (wet cleaning) program and the machine takes care of the rest. This allows the same machine to treat all laundry types including a delicate fabrics.



This new generation of Primus micro programmers offers you complete freedom of programming. This is the guarantee for you to optimize and adapt the process at any time and to ensure the easy integration of new washing methods and soaps.



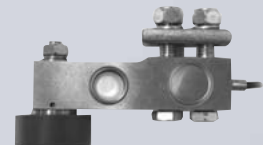
XControl programmer with unlimited programming possibilities for laundry professionals. USB plug for fast and easy uploading of new washing programmes.



The Trace-tech® management software provides record of each wash load which allows you to ensure conformity with Hygienic standards. This can be stored and recalled whenever necessary. Parameters are continually controlled and stored to bring you a detailed report of the washing process. You are also informed if the machine can not complete required process.



Together with Optiload® and Trace-tech®, the Sample's tap ensures you have complete control and traceability of your washing and disinfection process.



Whilst loading your machine, the Graphitronic® displays the weight of wash load. The machine will then adjust the water and energy consumption to suit to load. Thus, you have a guaranteed wash result, reduced energy consumption, so optimising productivity, and controlling of your operating costs.

# EXPERTS IN HYGIENE

FXB180



FXB240



FXB280



MB26



MB33



MB44



MB66



NEW

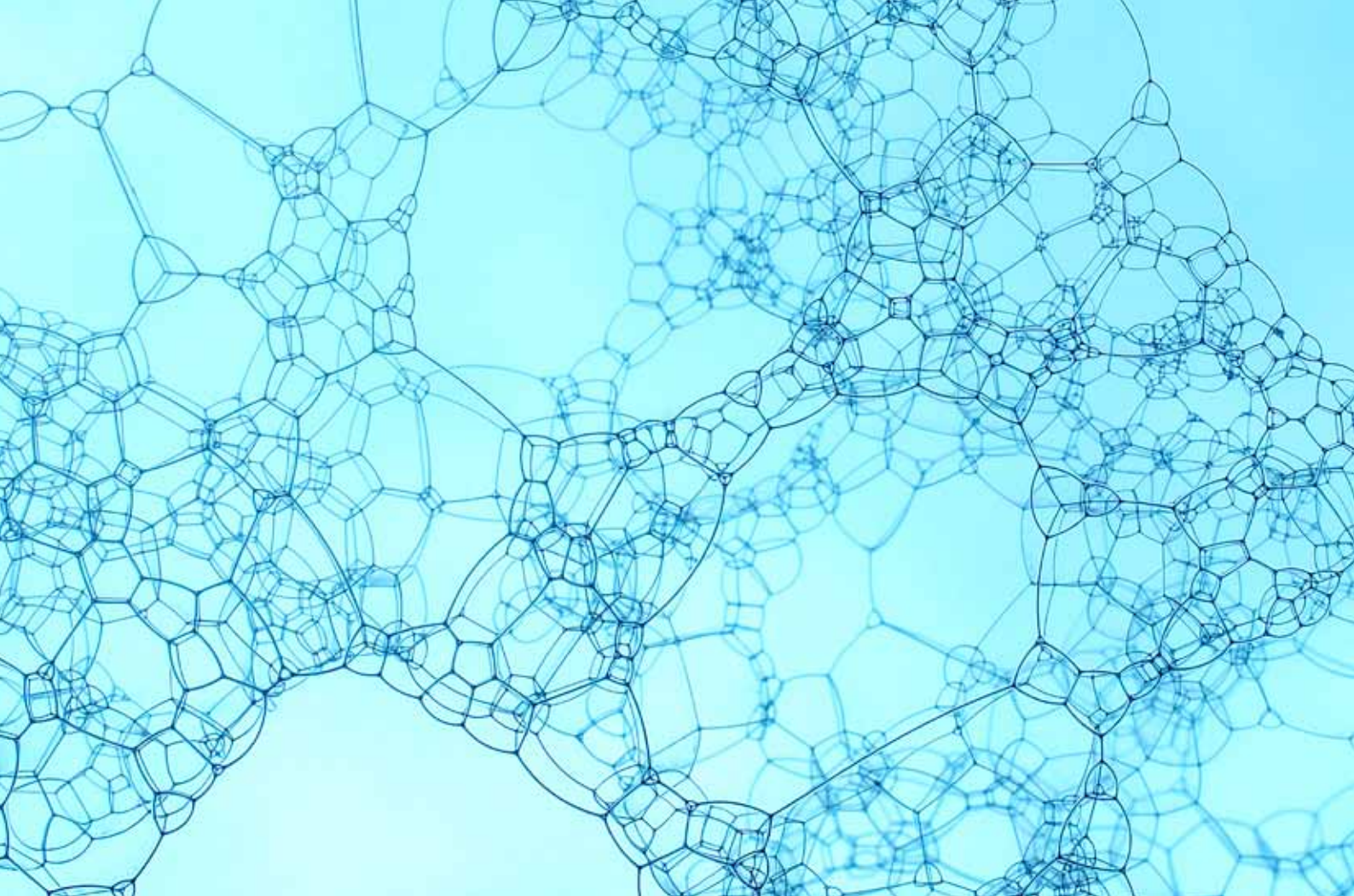
Capacity 1:10	18	24	28	26	33	44	66
Volume of the drum	180	240	280	265	332	442	663
Spin speed (rpm)	939	939	914	960	960	915	915
G-factor	370	370	350	335	335	350	350
Cabinet	Stainless steel	Stainless steel	Stainless steel	Powder painted steel/ Stainless steel optional	Powder painted steel/ Stainless steel optional	Powder painted steel/ Stainless steel optional	Powder painted steel/ Stainless steel optional
Control	XControl Plus	XControl Plus	XControl Plus	Graphitronic® as standard	Graphitronic® as standard	Graphitronic® as standard	Graphitronic® as standard
Electrical Heating (kW)	12/18	18	21,9	24	36	45	54
Steam heating (bar)	3-8	3-8	3-8	3-8	3-8	3-8	3-8
Electrical connection	3 x 380-440V 50 Hz	3 x 380-440V 50 Hz	3 x 380-440V 50 Hz	3 x 380-440V 50 Hz	3 x 380-415V 50 Hz	3 x 380-440V 50 Hz	3 x 380-415V 50 Hz
Steam connection	1/2"	1/2"	1/2"	3/4"	3/4"	3/4"	3/4"
Water connection	3 x 3/4"	3 x 3/4"	3 x 3/4"	3 x 1"	3 x 1"	3 x 1"	3 x 1"
Dimensions HxWxD (mm)	1455x900x1145	1455x1020x1145	1455x1130x1145	1600x1410x1060	1600x1560x1060	1650x1610x1170	1650x2160x1170
Net weight (kg)	430	460	490	960	1000	1140	1360
Gross weight (kg)	485	515	550	1050	1090	1280	1510
Dimensions packed HxWxD (mm)	1610x1010x1235	1610x1130x1235	1610x1240x1235	1840x1465x1175	1840x1610x1175	1840x1660x1380	1840x2200x1380

# BIG RANGE THINK BIG

[www.primuslaundry.com](http://www.primuslaundry.com)



	MB70	MB90	MB110	MB140	MB180
Capacity 1:10	70	90	110	140	180
Volume of the drum	700	900	1100	1400	1800
Spin speed (rpm)	800	800	754	720	695
G-factor	360	360	350	350	350
Cabinet	Stainless steel	Stainless steel	Stainless steel	Stainless steel	Stainless steel
Control	Graphitronic® as standard	Graphitronic® as standard	Graphitronic® as standard	Graphitronic® as standard	Graphitronic® as standard
Electrical Heating (kW)	54 or 72	54 or 72	72 or 96	72 or 96	-
Steam heating (bar)	6-8	6-8	6-8	6-8	6-8
Electrical connection	3x380-480V 50 Hz	3 x 380-480V 50 Hz	3x380-480V 50 Hz	3 x 380-480V 50 Hz	3 x 380-480V 50 Hz
Steam connection	1"	1"	1"	1"	1"
Water connection	3x1,5" + 1x3/4"	3x1,5 + 1x3/4"	3x1,5" + 1x3/4"	3x1,5" + 1x3/4"	3x1,5" + 1x1"
Dimensions HxWxD (mm)	1805x2025x1615	1805x2275x1615	1855x2325x1615	2075x2435x1805	2165x2585x1905
Net weight (kg)	2600	2810	2990	3550	4990
Gross weight (kg)	2760	2970	3150	3760	5310
Dimensions packed HxWxD (mm)	1985x2100x1740	1985x2355x1740	2080x2400x1740	2250x2485x1940	2265x2665x2040



#### ALLIANCE INTERNATIONAL

Nieuwstraat 146, 8560 Wevelgem

**Belgium**

---

**Tel.:** +32 56 43 52 00  
**Fax:** +32 56 40 34 63  
**E-mail:** [info@primuslaundry.com](mailto:info@primuslaundry.com)

---

#### ALLIANCE LAUNDRY CE

Místecká 1116, 742 58, Příbor

**Czech Republic**

---

**Tel.:** +420 556 768 800  
**Fax:** +420 556 723 383  
**E-mail:** [sales@primuslaundry.cz](mailto:sales@primuslaundry.cz)

---



PRIMUS is a division of Alliance Laundry Systems.  
Alliance is the world's leading manufacturer of commercial  
laundry equipment. Learn more at [alliancelaundry.com](http://alliancelaundry.com)

[www.primuslaundry.com](http://www.primuslaundry.com)