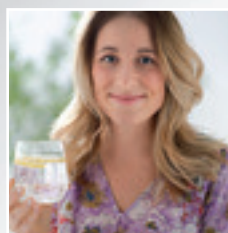


Zip HydroTap® **at work.**

Boiling and chilled filtered water, instantly. *Sparkling, too!*







Simpler.

Zip HydroTap now offers you the option of sparkling chilled filtered water as well as boiling and chilled filtered water – instantly.

Boiling

Boiling filtered water, instantly, for tea, coffee, soup and cooking.

No more time wasted waiting for water to boil. Zip HydroTap makes it all so efficient!

Chilled

Crystal-clear, great-tasting chilled filtered drinking water, always on tap.

No money wasted on bottled water. No time off the job hunting for water.

Sparkling

Sparkling chilled filtered water at a fraction of the cost of bottled water.

So refreshing! Adds life to juices, cordials, spirits and wines.

Safer.

Far safer to use than any kettle, Zip HydroTap puts you in total control of your kitchen safety.

A unique safety lock eliminates the risk of accidental discharge of boiling water. You need to press both the red lever and the “safety” button at the same time for access to boiling water.



Press the blue lever for chilled filtered water. The lever action tap gives you simple fingertip control for filling a glass, jug, carafe or bottle to just the right level without splashing or waste.



Choose a Zip HydroTap SPARKLING model and you can simply depress both levers for sparkling chilled filtered water, instantly. Great to drink on its own. Great with mixers.



Avoid steam exposure to your hands when filling pots with boiling water. Flick up the red lever, and boiling water runs ‘hands free’ continuously for any pre-set period of 5 to 15 seconds.



You can limit boiling water access whenever you wish. To make boiling water unavailable when your kitchen is unattended, it's easy to turn the boiling water isolation feature on and off.







Healthier.

For healthier drinking, Zip HydroTap now filters your water 25 times finer. It's the world's last word in water filtration.

New Zip 0.2-micron filters reduce chlorine taste and odour and filter out particles more than one fifth of a micron in size – that's one five-thousandth (1/5000th) of a millimetre – twenty five times finer than commonly used 5.0 micron filters, designed to filter out both Cryptosporidium and Giardia cysts and other impurities, for crystal-clear great-tasting water and healthier drinking.

This is arguably the most advanced and most practical water filtration system available anywhere today, developed to meet our exacting specifications by the world leader in water filter technology.

Zip 0.2-micron filter cartridges are incorporated into the Zip HydroTap installation under the sink, or out of sight within the Zip HydroTap control cabinet installed beneath the tap.



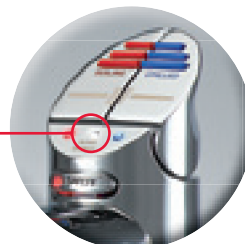
Zip 0.2-micron filter cartridges are hygienically encased for fast and easy filter cartridge replacements. Cartridges are replaced every 12 months, or earlier if a high level of water usage makes it necessary.



Look for the NSF symbol on any water filter label. It is the only way you know for sure that your filter is tested and certified by the globally recognised NSF International organisation against the NSF/ANSI standards 42 and 53.



Zip HydroTap “filter change light” flashes when a filter change is due. It can be set to measure both water volume and the number of days in service, signaling whichever occurs first.





Greener.

Beyond comparison for energy efficiency, Zip HydroTap also stamps out water wastage, leading the world in sustainable technology.



Advanced technology cuts power consumption.

Power-Pulse™ electronic technology controls power phasing precisely, to minimise energy consumption and power costs.



Enjoy more precise temperature control.

Power-Pulse™ also regulates boiling water temperature more precisely than ever before, maintaining the set temperature within 0.2°C.



Automatically calculates boiling point.

Because boiling point varies by altitude, Zip HydroTap pinpoints boiling point during installation and sets its controls accordingly.



Boiling water temperature is adjustable.

During installation, boiling temperature can be varied from 99°C to 68°C if a lower temperature is preferred. Factory setting: 98°C.



Automatically sleeps when unused.

After two hours of non-use, Zip HydroTap either powers down to maintain boiling water at 64°C or hibernates – powers off completely.



Slow-flash light signals when in hibernation mode.

Touch the controls and the system awakens. Blue and red lights flash, then remain steady when boiling and chilled temperatures are okay.



Programmable 24/7 weekly timer.

Turns the power off during periods your kitchen is not in use - during weekdays, or overnight, or during periods you are away.



Free Flow™ bottle-filling feature.

The “Free Flow” feature now incorporated into all Zip HydroTap models allows you to fill bottle after bottle with filtered cold water even when the rated chilled water capacity is exceeded.



Cuts down water wastage, too.

Every drop of water is dispensed at the set temperature so there is no water wasted running a tap until the temperature is right.



An air-cooled system, not water-cooled.

Air-cooled systems never dump water into the drain, as water-cooled systems do. It's far more environmentally responsible.

Smarter.

Zip HydroTap costs so little to run.
Zip power-saving technology leads
the world in economical operating costs.

Operating power without water draw-off

Costs less than \$1.90 week

Costs vary according to power supplier and usage.
With sleep mode operating 10 hours out of each 24,
typical daily operating power usage is 0.817 kWh.
At \$0.30 per kWh, that's less than \$1.90 per week.



Additional power cost per cup of boiling filtered water drawn off

Over 240 cups for \$1.00

Extra power to boil each 167 mL cup = 0.013 kWh.



Additional power cost per glass of chilled filtered water drawn off

Over 520 glasses for \$1.00

Extra power to chill each 200 mL glass = 0.006 kWh.



Power consumption estimates for a Zip HydroTap Compact 2 model rated at 1.7 kW are based on typical results of technical tests carried out for Zip and independently verified by the University of NSW. Assumed typical day is 14 hours operational mode, 10 hours sleep mode. Operational mode is the default setting; the system phases sufficient power to maintain set temperature in tanks. Sleep mode = the system powers down if not used for 2 hours, phases only enough energy to maintain boiling water >64°C. Test conditions = boiling water at 98°C and chilled water at between 5°C and 10°C.



More Choices.

Which Zip HydroTap is right for your office, showroom, canteen or waiting room? Zip offers the world's most comprehensive range of boiling and chilled filtered water systems for any workplace.

Zip HydroTap **COMMERCIAL MODELS**

Boiling and chilled filtered water,
or boiling and ambient (cold),
or boiling only, or chilled only.

Page 14-15



Zip HydroTap **SPARKLING MODELS**

Boiling, chilled and sparkling filtered water.

Page 16-17



Zip HydroTap **4-IN-1 MODELS**

Boiling and chilled filtered water plus hot
and cold water – one boiling/chilled tap,
one hot/cold mixer.

Page 18-19



Zip HydroTap **3-IN-1 MODELS**

Boiling filtered water plus hot and
cold water – one boiling water tap,
one hot/cold mixer.

Page 20-21



Zip HydroTap **ALL-IN-ONE MODELS**

Single tap gives boiling, chilled,
hot and cold water.

Page 22-23



Zip HydroTap **INDUSTRIAL MODELS**

Boiling and chilled filtered water,
with robust vandal-resistant
touch-buttons instead of levers.

Page 24-25





Zip HydroTap **COMMERCIAL MODELS.**

The world's most popular range for office kitchens and canteens.

Boiling and chilled filtered water, instantly.

| | | | |
|--------------------------------------|-----------------|-----------------|-----------------|
| Tap Finish | Bright Chrome | Bright Chrome | Bright Chrome |
| Order Code | HT1503 | HT1504 | HT1505 |
| Font Accessory Code | 90046 | 90046 | 90046 |
| Boiling Cups/Hr | 120 | 160 | 240 |
| Chilled Glasses/Hr | 60 | 125 | 175 |
| Total Rating | 2.3 kW | 2.3 kW | 3.4 kW |
| Cabinet Dimensions W x D x H (mm) | 385 x 380 x 350 | 430 x 430 x 340 | 489 x 470 x 393 |



Boiling and ambient (cold) filtered water, instantly.

| | | |
|--------------------------------------|-----------------|-----------------|
| Tap Finish | Bright Chrome | Bright Chrome |
| Order Code | HT1532 | HT1533 |
| Font Accessory Code | 90046 | 90046 |
| Boiling Cups/Hr | 160 | 240 |
| Total Rating | 2.0 kW | 3.0 kW |
| Cabinet Dimensions W x D x H (mm) | 280 x 323 x 337 | 308 x 344 x 393 |



Boiling filtered water, instantly.

| | | |
|--------------------------------------|-----------------|-----------------|
| Tap Finish | Bright Chrome | Bright Chrome |
| Order Code | HT1537 | HT1538 |
| Font Accessory Code | 90046 | 90046 |
| Boiling Cups/Hr | 160 | 240 |
| Total Rating | 2.0 kW | 3.0 kW |
| Cabinet Dimensions W x D x H (mm) | 280 x 323 x 337 | 308 x 344 x 393 |



Chilled filtered water, instantly.

| | |
|--------------------------------------|-----------------|
| Tap Finish | Bright Chrome |
| Order Code | HT1536 |
| Font Accessory Code | 90046 |
| Chilled Glasses/Hr | 125 |
| Total Rating | 0.245 kW |
| Cabinet Dimensions W x D x H (mm) | 306 x 457 x 334 |





.....

Simple to install at any sink.

Zip Free-Flow™
Limitless bottle filling capacity.

0.2 micron
Zip Filtration
Now 0.2 micron.

Zip Power-Pulse™
Zip cuts power costs five ways.

Can be installed away from any sink with the optional Zip "font" accessory.

Zip HydroTap **SPARKLING MODELS.**

Another world-first in workplace convenience, from Zip.



Single under-bench cabinet.

| | |
|-----------------------------------|-----------------|
| Tap Finish | Bright Chrome |
| Order Code | HT1500 |
| Font Accessory Code | 90046 |
| Boiling Cups/Hr | 120 |
| Chilled or Sparkling Glasses/Hr | 125 |
| Total Rating | 1.8 kW |
| Cabinet Dimensions W x D x H (mm) | 385 x 413 x 349 |

High capacity split-cabinet systems.

| | | |
|---------------------------------|-----------------|-----------------|
| Tap Finish | Bright Chrome | Bright Chrome |
| Order Code | HT1501 | HT1502 |
| Font Accessory | 90046 | 90046 |
| Boiling Cups/Hr | 160 | 240 |
| Chilled or Sparkling Glasses/Hr | 125 | 125 |
| Total Rating | 2.3 kW | 3.4 kW |
| Cabinet Dimensions | | |
| Boiling W x D x H (mm) | 280 x 323 x 337 | 308 x 344 x 393 |
| Chilled W x D x H (mm) | 354 x 247 x 369 | 354 x 247 x 369 |

.....



Simple to install at any sink.

**Zip Free-Flow™**

Limitless bottle filling capacity.

**Zip Filtration**

Now 0.2 micron.

**Zip Power-Pulse™**

Zip cuts power costs five ways.



Can be installed away from any sink with the optional Zip “font” accessory.

Zip HydroTap 4-IN-1 MODELS.

Boiling and chilled filtered water plus hot and cold water.
Separate boiling/chilled tap and hot/cold mixer.



Classic Mixer Tap

| | | |
|--------------------------------------|-----------------|-----------------|
| Tap Finish | Bright Chrome | Bright Chrome |
| Order Code | HT1506 | HT1509 |
| Font Accessory Code | 90046 | 90046 |
| Boiling Cups/Hr | 160 | 240 |
| Chilled Glasses/Hr | 125 | 175 |
| Total Rating | 2.3 kW | 3.4 kW |
| Cabinet Dimensions W x D x H (mm) | 430 x 430 x 340 | 489 x 470 x 393 |



Tall Mixer Tap.

| | | |
|--------------------------------------|-----------------|-----------------|
| Tap Finish | Bright Chrome | Bright Chrome |
| Order Code | HT1507 | HT1510 |
| Font Accessory Code | 90046 | 90046 |
| Boiling Cups/Hr | 160 | 240 |
| Chilled Glasses/Hr | 125 | 175 |
| Total Rating | 2.3 kW | 3.4 kW |
| Cabinet Dimensions W x D x H (mm) | 430 x 430 x 340 | 489 x 470 x 393 |



Square Mixer Tap.

| | | |
|--------------------------------------|-----------------|-----------------|
| Tap Finish | Bright Chrome | Bright Chrome |
| Order Code | HT1508 | HT1511 |
| Font Accessory Code | 90046 | 90046 |
| Boiling Cups/Hr | 160 | 240 |
| Chilled Glasses/Hr | 125 | 175 |
| Total Rating | 2.3 kW | 3.4 kW |
| Cabinet Dimensions W x D x H (mm) | 430 x 430 x 340 | 489 x 470 x 393 |



WELS rating is for mixer tap



Boiling/chilled tap can be installed away from any sink with the optional Zip "font" accessory.



Zip Free-Flow™

Limitless bottle filling capacity.



Zip Filtration

Now 0.2 micron.



Zip Power-Pulse™

Zip cuts power costs five ways.

Zip HydroTap 3-IN-1 MODELS.

Boiling filtered water plus hot and cold water.
Separate boiling water tap and hot/cold mixer.



Classic Mixer Tap

| | | |
|--------------------------------------|-----------------|-----------------|
| Tap Finish | Bright Chrome | Bright Chrome |
| Order Code | HT1526 | HT1529 |
| Font Accessory Code | 90046 | 90046 |
| Boiling Cups/Hr | 160 | 240 |
| Total Rating | 1.5 kW | 3.0 kW |
| Cabinet Dimensions W x D x H (mm) | 280 x 323 x 337 | 310 x 340 x 394 |



Tall Mixer Tap.

| | | |
|--------------------------------------|-----------------|-----------------|
| Tap Finish | Bright Chrome | Bright Chrome |
| Order Code | HT1527 | HT1530 |
| Font Accessory Code | 90046 | 90046 |
| Boiling Cups/Hr | 160 | 240 |
| Total Rating | 1.5 kW | 3.0 kW |
| Cabinet Dimensions W x D x H (mm) | 280 x 323 x 337 | 310 x 340 x 394 |



Square Mixer Tap.

| | | |
|--------------------------------------|-----------------|-----------------|
| Tap Finish | Bright Chrome | Bright Chrome |
| Order Code | HT1528 | HT1531 |
| Font Accessory Code | 90046 | 90046 |
| Boiling Cups/Hr | 160 | 240 |
| Total Rating | 1.5 kW | 3.0 kW |
| Cabinet Dimensions W x D x H (mm) | 280 x 323 x 337 | 310 x 340 x 394 |



WELS rating is for mixer tap



Boiling tap can be installed away from any sink with the optional Zip "font" accessory.



Zip Free-Flow™

Limitless bottle filling capacity.



Zip Filtration

Now 0.2 micron.



Zip Power-Pulse™

Zip cuts power costs five ways.

Zip HydroTap **ALL-IN-ONE MODELS.**

Revolutionizing design of stylish kitchens.



+



+

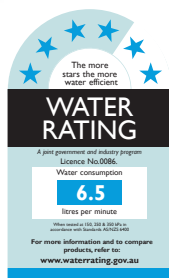


Zip HydroTap All-In-One now makes it practical for you to plan a kitchen in which you have boiling and chilled filtered water, instantly, plus hot and cold water, all from a single tap.

You can connect a Zip HydroTap All-In-One to your mains pressure hot and cold water supply, or choose a model which mixes cold water with boiling water to give hot water, eliminating the need for connection to a separate hot water heater or separate mains pressure hot water.



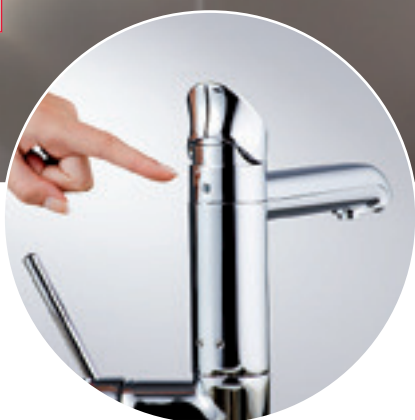
WELS Rating for
All-In-One Vented



WELS Rating for
All-In-One Non-Vented

Zip HydroTap **ALL-IN-ONE.**

| Tap Finish | Bright Chrome | Bright Chrome | Bright Chrome | Bright Chrome |
|--------------------------------------|-----------------|-----------------|-----------------|-----------------|
| Order Code | HT1518 | HT1519 | HT1520 | HT1521 |
| Boiling Cups/Hr | 160 | 240 | 160 | 240 |
| Chilled Glasses/Hr | 125 | 175 | 125 | 175 |
| Water Input | Cold Only | Cold Only | Hot & Cold | Hot & Cold |
| Total Rating | 2.3 kW | 3.4 kW | 2.3 kW | 3.4 kW |
| Cabinet Dimensions W x D x H (mm) | 430 x 430 x 340 | 489 x 470 x 393 | 430 x 430 x 340 | 489 x 470 x 393 |



Additional energy-saving feature!
A light sensor on the rear of the tap shank sends the system to sleep whenever the room goes dark.



The Zip HydroTap All-In-One
swivel action tap dispenses boiling, chilled, hot or cold water into either bowl of a two bowl sink.



Zip Free-Flow™
Limitless bottle filling capacity.



Zip Filtration
Now 0.2 micron.



Zip Power-Pulse™
Zip cuts power costs five ways.

Zip HydroTap **INDUSTRIAL MODELS.**

Top-touch models ideal for high-demand industrial sites.
Side-touch models developed specially for custodial sites.



Top-touch models for industrial sites.

| | | |
|--------------------------------------|-----------------|-----------------|
| Tap Finish | Bright Chrome | Bright Chrome |
| Order Code | HT1522 | HT1523 |
| Boiling Cups/Hr | 160 | 240 |
| Chilled Glasses/Hr | 125 | 175 |
| Total Rating | 2.3 kW | 3.4 kW |
| Cabinet Dimensions W x D x H (mm) | 430 x 430 x 340 | 489 x 470 x 393 |

Side-touch models for custodial centres

| | | |
|--------------------------------------|-----------------|-----------------|
| Tap Finish | Bright Chrome | Bright Chrome |
| Order Code | HT1524 | HT1525 |
| Boiling Cups/Hr | 160 | 240 |
| Chilled Glasses/Hr | 125 | 175 |
| Total Rating | 2.3 kW | 3.4 kW |
| Cabinet Dimensions W x D x H (mm) | 430 x 430 x 340 | 489 x 470 x 393 |



Side-touch models come complete with a high strength 25 mm tapered base which fastens to an under bench clamp block via a high strength steel spine, reinforcing the whole of the length of the tap shank. Vandal resistant. Developed specifically for the needs of custodial centres.



Zip Free-Flow™

Limitless bottle filling capacity.



Zip Filtration

Now 0.2 micron.



Zip Power-Pulse™

Zip cuts power costs five ways.

Simple **INSTALLATION.**

You can install your Zip HydroTap just about anywhere.

Location.

The tap must be positioned so that it drains into a suitable sink, or be installed on the optional "tap font kit". The tap should be situated as closely as possible to directly above the under-sink control cabinet. The maximum distance from the base of the tap to the control cabinet is one metre. The under-sink control cabinet must have top, side and rear clearances as shown on the drawings.

Plumbing.

Zip HydroTap must be installed in accordance with AS/NZS 3500 plumbing regulations, and be connected to a potable (drinkable) cold water supply. The Zip HydroTap All-In-One, 4-In-One and 3-In-One models require a water supply which delivers at least two litres per minute at a minimum dynamic pressure of 200 kPa. Other Zip HydroTap models require 172 kPa minimum. A pressure limiting valve (supplied) must be fitted at the time of installation. An isolating valve (not supplied) must be fitted between the control cabinet and the water supply. All connecting tubing must be taut for proper drainage.

Electrical.

Models with a total rating of 2.4 kW or less should be connected to a 10 amp GPO 220-240 volt AC power supply in accordance with AS/NZS 3350 and 3000 wiring

regulations. Models with a total rating of more than 2.4 kW require one 15 amp GPO. "Sparkling" model HT1501 requires two 10 amp GPOs, and "sparkling" model HT1502 requires one 15 amp GPO and one 10 amp GPO.

Ventilation.

For efficient operation, cupboards must be adequately ventilated. Cupboard doors should be offset using 4 mm buffers provided. With large capacity models on high demand sites, the addition of a Zip "Aire" ventilation system should be considered (order code 91287).

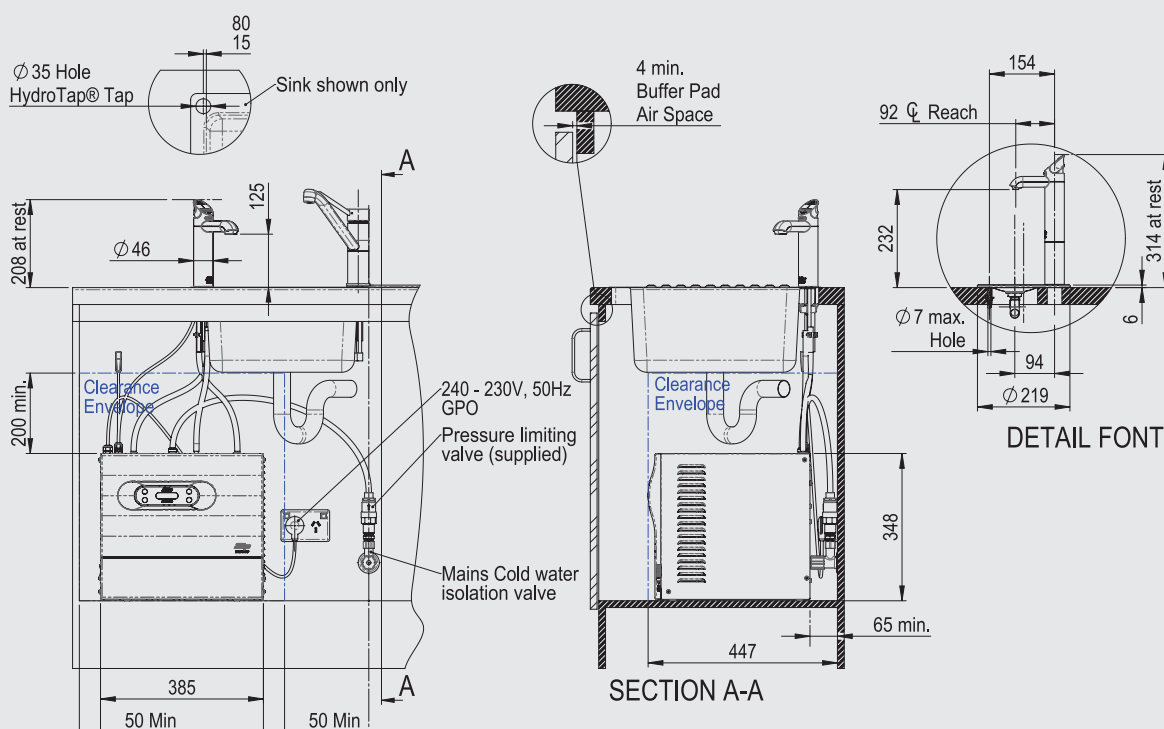
Carbon Dioxide.

The CO₂ gas cylinder supplied with "sparkling" models must be secured in a suitable location using the strap provided. The gas regulator supplied must be fitted. Each cylinder contains 1 Kg of CO₂ and should be installed in a well ventilated area or a room of no less than 38 cubic metres. See website for gas cylinder MSDS sheet for complete list of warnings.

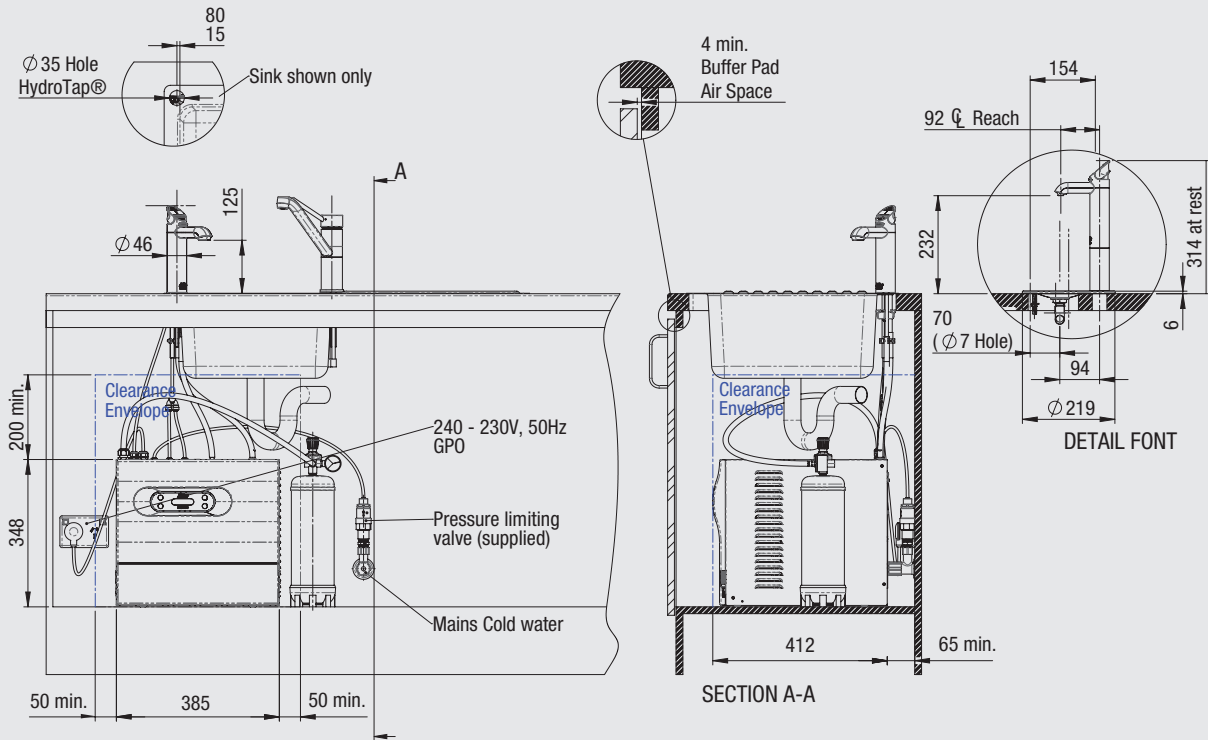
Caution.

In some hard water areas where mineral scale accumulation can become a problem, consideration should be given to the maintenance required. Asuitable form of water treatment may be necessary.

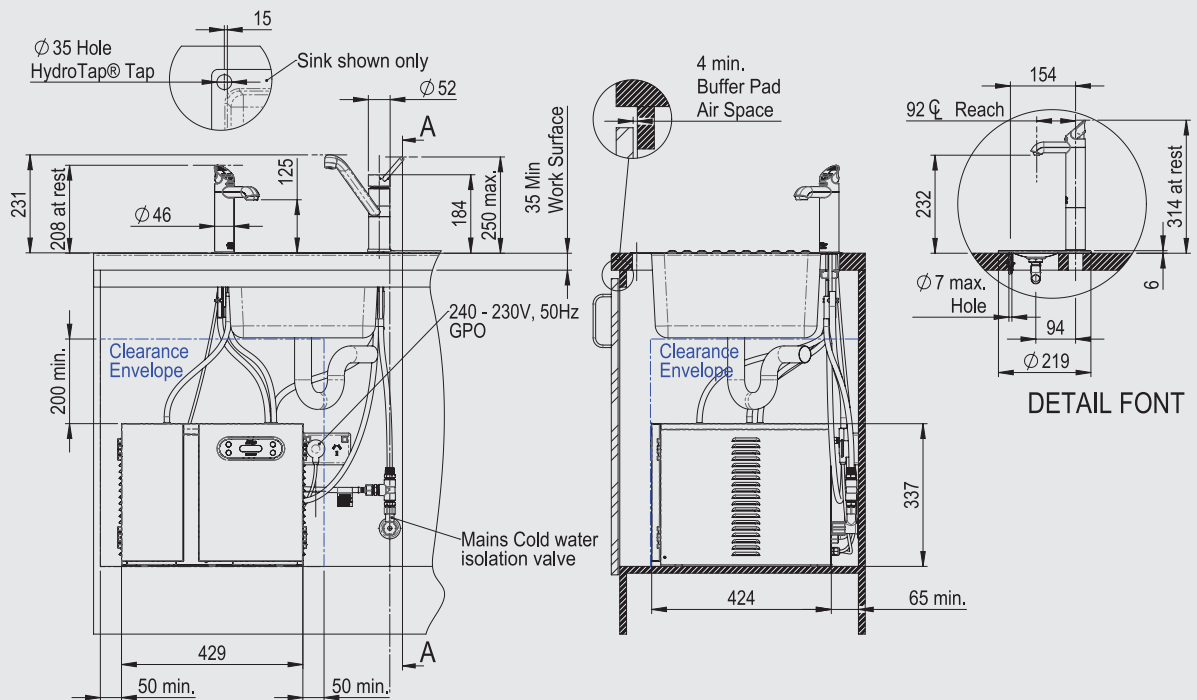
1. Zip HydroTap **COMMERCIAL MODELS**



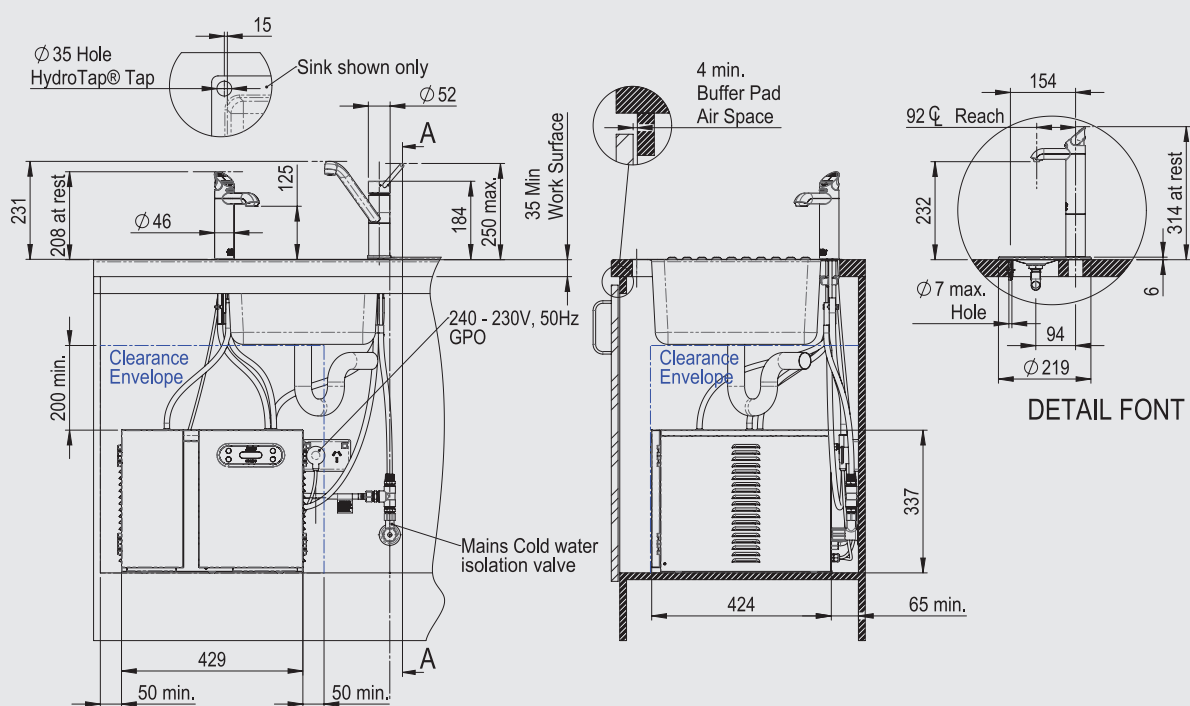
2. Zip HydroTap SPARKLING MODELS



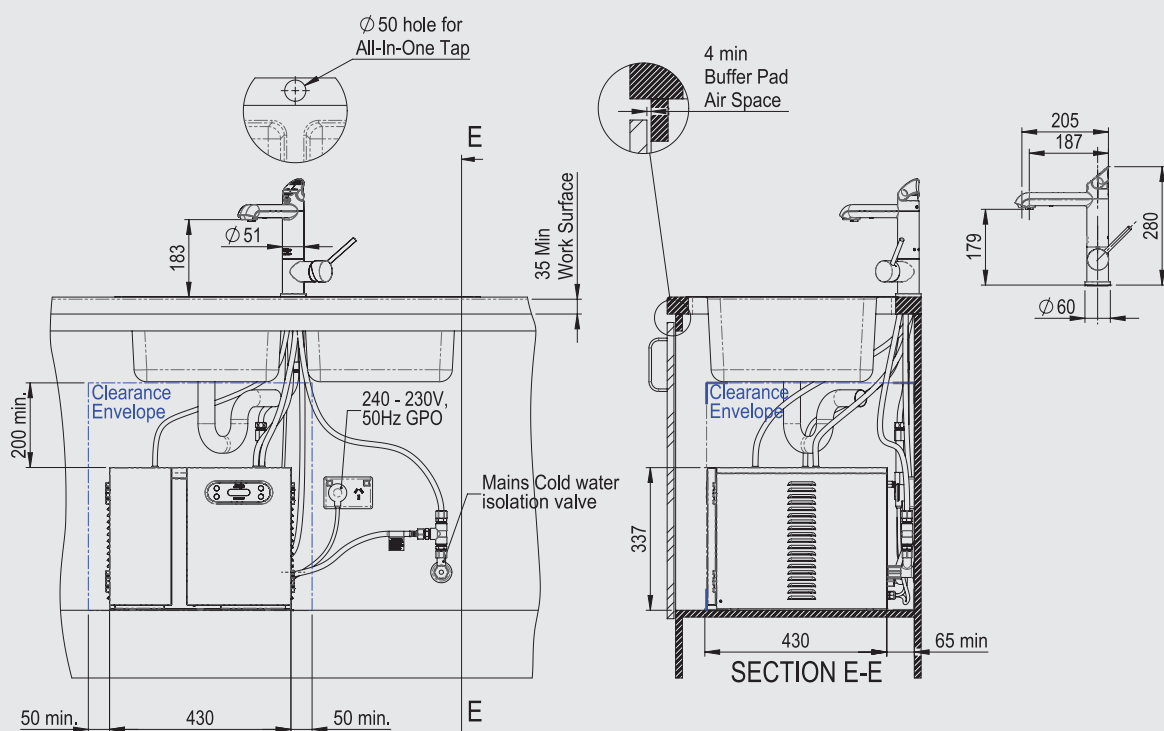
3. Zip HydroTap 4-IN-1 MODELS



4. Zip HydroTap 3-IN-1 MODELS (correct diagram to come)

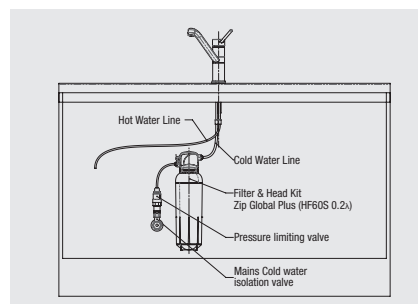


5. Zip HydroTap ALL-IN-ONE MODELS

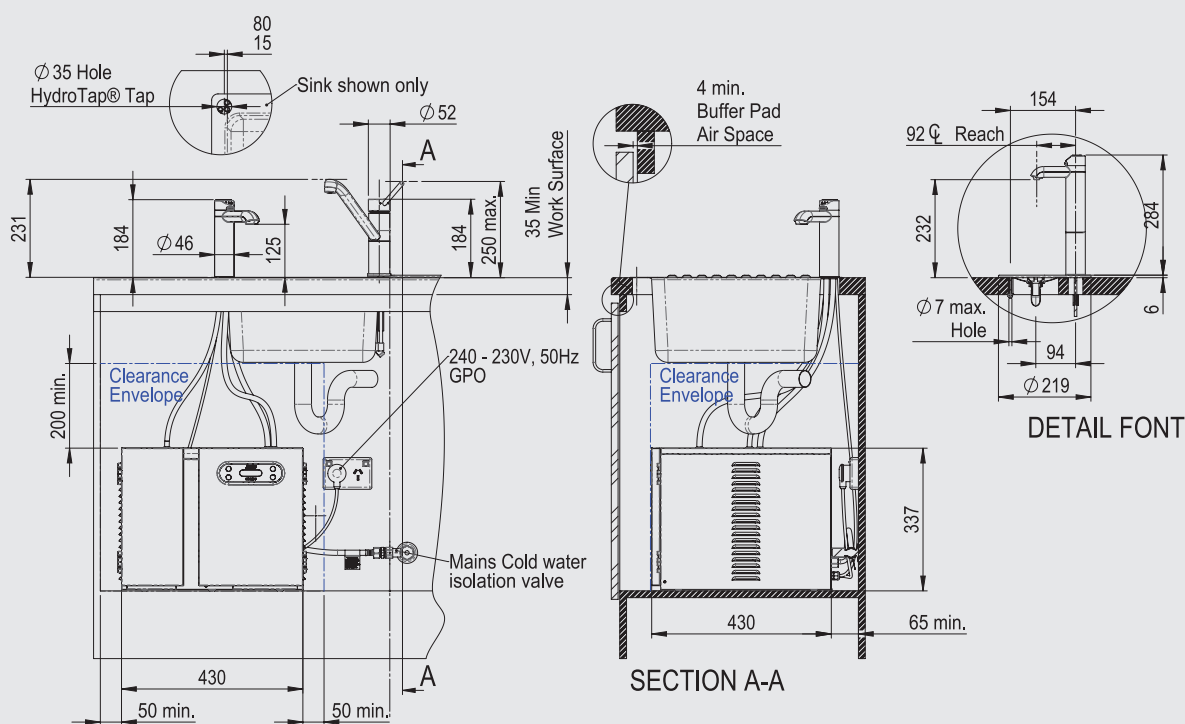


Kitchen tap filtration.

An alternative filtered drinking water system can be created by installing a Zip Global Plus high volume water filter. Developed initially for the food service industry, Zip Global Plus filters provide high flow rates and have high water volume capacity. Recommended is the Zip Global Plus 60S filter, 0.2 micron filtration, 12.6 litres per minute flow rate, and 132,000 litre capacity. Zip Global Plus Filter & Head Kit Order Code 92299. Replacement Filter Code 90993.



6. Zip HydroTap INDUSTRIAL MODELS



Making life simpler for users with limited mobility or impaired vision.

When specifying a Zip HydroTap for any kitchen catering for users with limited mobility or impaired vision, you can provide for their special needs by selecting a Zip HydroTap model supplied with oversize levers fitted, and with Braille lever-covers also supplied as an accessory to be fitted to the levers on site if you wish. Oversize levers and Braille lever-covers are available for all Zip HydroTap models with the exception of Zip HydroTap All-In-One, Zip HydroTap Industrial models, or Zip HydroTap Miniboil. Braille covers are colour coded red and blue to suit models giving boiling and chilled filtered water, boiling filtered water only, or boiling and ambient (cold) water. For details of “disabled” models, please call Zip Customer Care on 1800 42 43 44.



Oversize levers



Braille lever covers