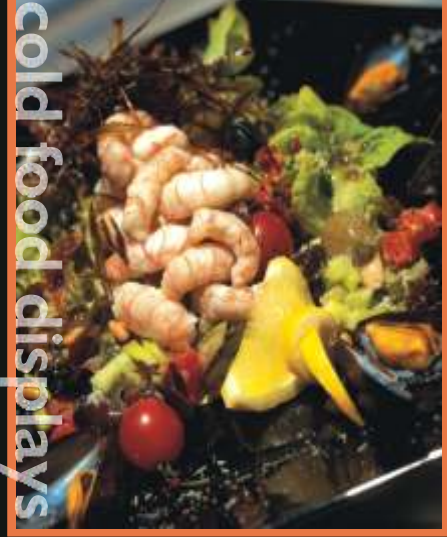


# cold food display cabinets



**MODELS: WCFS/C23; WCFS/C24; WCFS/C25; WCFS/C26**

### STANDARD FEATURES

- High quality refrigeration with both top mounted cross fin coil and 90mm refrigerated plate - ensuring food is kept at required temperature
- Fully sealed toughened glass used throughout for maximum safety and hygiene
- Radiused bottom glass channel for easy of cleaning
- Double skinned air insulated tank for safer, more efficient use
- Double skinned glass for condensation prevention
- IP rated waterproof controls
- Full size gastronorm cavity to take choice of 65mm pan combinations
- Includes evaporator burn-off tray - does not need plumbing to waste

### OPTIONS

Easy to accessorise with:

- Rear glass sliding doors (add G to code)
- 1/2 size pans, 65mm deep (add 65 to code)

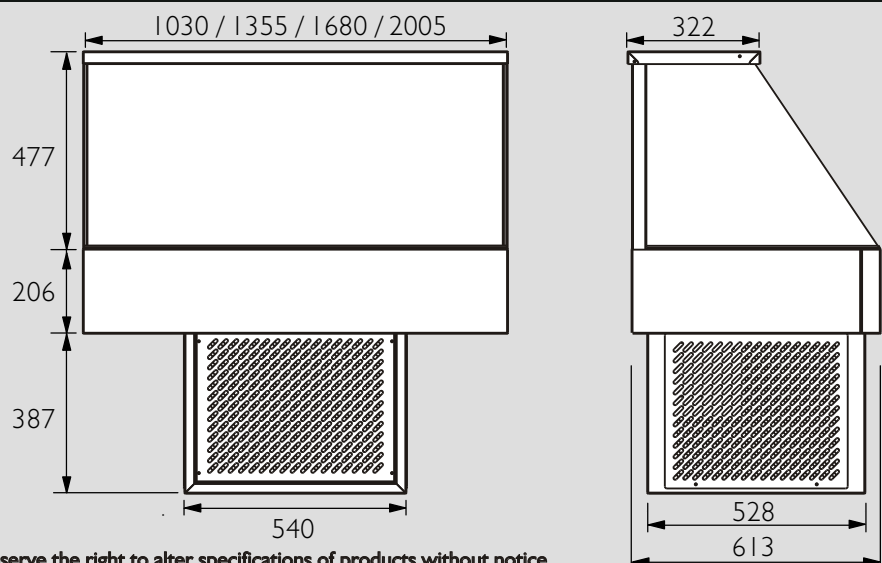


Model shown WCFS23 with optional pan combination

www.TotalCommercialEquipment.com.au 08 8363 5282

## WCFS/C

<b>WCFS23 - 3 pans wide, 2 rows</b>			
Kw 2.4	W 1030	D 600	H 720
<b>WCFS24 - 4 pans wide, 2 rows</b>			
Kw 2.4	W 1355	D 600	H 720
<b>WCFS25 - 5 pans wide, 2 rows</b>			
Kw 2.4	W 1680	D 600	H 720
<b>WCFS26 - 6 pans wide, 2 rows</b>			
Kw 2.4	W 2005	D 600	H 720



We reserve the right to alter specifications of products without notice

**Dealer:**

QLD, NT, WA, International  
ph 07 3344 2444 fax 07 3345 6403  
email fse@stoddart.com.au

NSW, ACT  
ph 02 9817 7700 fax 02 9817 7800  
email gladesville@stoddart.com.au

VIC, SA, TAS  
ph 03 9543 9922 fax 03 9543 9944  
email melbourne@stoddart.com.au

Distributed by: Tom Stoddart Pty Ltd, 215 Jackson Road Sunnybank Hills, Qld 4109 Australia